

# SUZUKI *Avenis*

## MORE ZIP PER TRIP

With Suzuki  
Ride Connect\*



Race Edition now available in Metallic Sonic Silver/Metallic Triton Blue.



NEW  
**E20**  
COMPLIANT

\*Suzuki Ride Connect app is available for Android™ OS and iOS both.



## THE POWERFUL 125CC ENGINE

with state-of-the-art  
SEP and FI technology  
is designed to set you apart.



## E20 COMPLIANT

As a part of our effort towards carbon reduction, entire range of Suzuki scooters is now E20 compliant. E20 Fuel type is more environment friendly as its use results in lower carbon emission.



## SUZUKI AVENIS. ZIP AHEAD IN STYLE.

*The Suzuki Avenis is a performance-driven sporty scooter that has enough power to make any journey zippy.*

*Its motorcycle-inspired rear indicators, split grab rail and body mount LED headlamp lend it a distinct and sporty look which stands out. It comes with Suzuki Ride Connect - Smart connectivity feature which navigates and keeps you on track all the time. Ride one today to feel the difference.*





Now, reach your destination without any confusion. The Bluetooth® Enabled Digital Console gives you Big and Bold Turn-by-Turn Navigation icons, keeping you on the right route every time.



## Missed Call Alert & Caller ID^^

Get to know who is calling and view missed calls, without even touching the phone, on the Bluetooth® Enabled Digital Console.



## Speed Exceeding Alert

Set a speed limit on your Suzuki Ride Connect app and whenever you exceed that limit, it will give you an alert for same.



## Call, SMS & WhatsApp Alerts

LCD and LED Blinking + Notification display on cluster.



## Suzuki Ride Connect\* with Bluetooth® Enabled Digital Console\*\*



## Phone Battery Level Display

Phone Battery Level Display so that you never run out of power.



## Turn-by-Turn Navigation

Big and bold Turn-by-Turn Navigation icon display so that you never go off track from your destination.

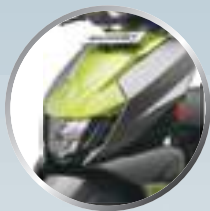


## ETA Updates

Estimated Time of Arrival display for never being late to your destination.

^^Missed Call Alert & Caller ID feature is available in Android™ OS only. \*Suzuki Ride Connect app is available for Android™ OS and iOS both.

\*\*Bluetooth® Enabled Digital Console is only available in Ride Connect Edition.



### ADVANCED SPORTY STYLING

The sporty styling is reflected in each and every element of the scooter and its unique design gives it a youthful look.



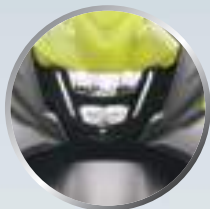
### EXTERNAL HINGE TYPE FUEL CAP

Refuel with ease without having to open the seat. This external hinge type fuel lid requires a key to open and operate, making it more secure.



### MOTORCYCLE INSPIRED REAR INDICATORS

Motorcycle inspired indicators that complement the sporty style.



### BODY MOUNT BRIGHT LED HEADLAMP

The super bright LED headlamp enhances visibility with its bright and wide radiated spread of light.



### LARGE UNDER SEAT STORAGE SPACE

A Helmet, Shopping Bags, Purse and Shoes can be easily kept in the 21.8 L capacity under-seat storage, protecting them from rain and dust.



### FRONT BOX WITH USB SOCKET

Box with lid on the left side has a capacity of 1 L to withstand 0.5 kg to place small items and an USB socket is installed inside the box for charging.



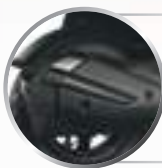


## FEATURES



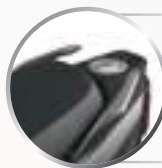
### SPORTY LED TAIL LAMP

Compact design with highly illuminated LED lights.



### SPORTY MUFFLER COVER

All-new design to complement the premium and sporty looks of the scooter.



### SPORTY SPLIT GRAB RAIL

Sportier body color split grab rail for that perfect grip.



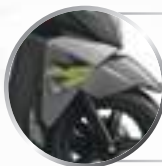
### SPORTY ALLOY WHEELS

Sporty alloy wheels that gives the scooter a smarter look and feel.



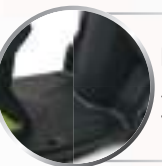
### SPORTY METER VISOR

Gives a sporty impression like the compact wind screen of sports bikes.



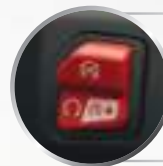
### SPORTY GRAPHICS

Sporty graphics in exciting new colours that sets the scooter apart.



### LONG FLOORBOARD

Long floorboard that lets you enjoy the best of both worlds - comfort and style.



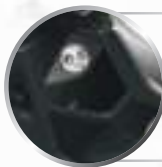
### ENGINE START AND STOP SWITCH WITH SUZUKI EASY START SYSTEM

Ensures stress-free ignition.



### CONVENIENT DUAL LUGGAGE HOOKS

The front hook is smartly placed to offer more leg room and ensures luggage doesn't drag, while the back hook can be locked so that the luggage won't fall off.



### FRONT RACK FOR STORAGE

Rack on the right side has a capacity of 1.6 L to withstand 0.5 kg.

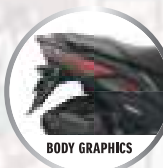
## GENUINE ACCESSORIES



REAR FOOTREST



KNUCKLE COVER



BODY GRAPHICS



FLOOR MAT



SEAT COVER

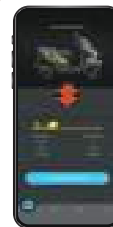


ACCESSORY BAR



# SUZUKI Avenis MORE ZIP PER TRIP

With Suzuki  
Ride Connect\*



## Suzuki Avenis Color Variants

NEW

Metallic Sonic Silver/ Pearl Mirage White/Metallic Matte Fibroin Grey Pearl Blaze Orange/Glass Metallic Matte Black/Glass Metallic Triton Blue - BPD Matte Fibroin Grey - A8D /Metallic Lush Green - CC8 Sparkle Black - CC7 Sparkle Black - KGL

\*Scan this QR code to download Suzuki Ride Connect Android™ App



\*Scan this QR code to download Suzuki Ride Connect iOS App



## UNIQUE APP FEATURES



Big & Bold  
TBT Navigation Icons



Short Distance  
Indicator Bar



Last Parked  
Location

Engine	
Type	4-Stroke, 1-Cylinder, Air-Cooled
Valve System	SOHC, 2 Valve
Displacement	124 cm³
Bore x Stroke	52.5 mm x 57.4 mm
Engine Output	8.7ps@6750rpm
Torque	10Nm@5500rpm
Fuel System	Fuel Injection
Starter System	Kick and Electric
Transmission Type	CVT

Dimensions and Weight	
Overall Length	1895 mm
Overall Width	710 mm
Overall Height	1175 mm
Wheelbase	1265 mm
Ground Clearance	160 mm
Seat Height	780 mm
Kerb Mass	106 kg
Wheels	Alloy
Fuel Tank	5.2 L

Suspension	
Front	Telescopic
Rear	Swing Arm
Tyre Size	
Front	90/90 -12 - Tubeless
Rear	90/100 - 10 - Tubeless
Brake	
Front	Disc
Rear	Drum
Electrical	
Battery	Maintenance Free 12V, 4Ah
Headlight	LED

Visit us at: [www.suzukimotorcycle.co.in](http://www.suzukimotorcycle.co.in) [f /suzuki2wheelers](https://www.facebook.com/suzuki2wheelers) [You Tube /suzuki2wheelers](https://www.youtube.com/suzuki2wheelers) [/suzuki2wheelers](https://www.instagram.com/suzuki2wheelers)

**Regd. Office, Sales & Marketing Office:** 2nd Floor, Plot No. 1, Nelson Mandela Road, Vasant Kunj, New Delhi -110 070. Fax: 011-4607 5418.

We reserve the right to make changes at any point of time, without prior notice in design, colour, specifications and features of product. All items/ products shown above are indicative only and may vary in actual. Colours shown may vary from actual body colour of the product due to printing. Accessories shown in the pictures are not a part of the standard product. For the latest authentic information, kindly contact your nearest Authorized Dealer. \*Suzuki Ride Connect Application is available for Android™ OS Version 6 onwards. Android is a trademark of Google LLC. \*Suzuki Ride Connect application is available for iOS version 12.0 onwards. IOS is a trademark or registered trademark of Cisco in the U.S. and other countries and is used under license. \*\*Missed call alert and caller ID feature is available in Android™ OS only. The Bluetooth® word mark and logos are registered trademarks owned by Bluetooth SIG, Inc. and any use of such marks by Suzuki is under license.

 Ride safe. Wear a helmet.

Please scan this QR code to visit our website



##Including 3 Years optional warranty.

\*\*Extended warranty is offered by third party.