



SUZUKI
BURGMAN
STREET

THE SPECIAL ONE

NOW, EVEN MORE SPECIAL.



SUZUKI
at your
Doorstep

Powered by
SEP
Ultra light and robust
125cc engine

NEW
E20
COMPLIANT



WITH **TURN-BY-TURN**
NAVIGATION.

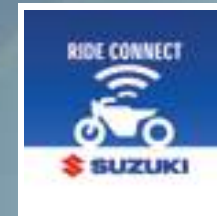


With
Suzuki Ride
Connect*

Now both iOS and Android™ OS compatible.

*Suzuki Ride Connect app is available for Android™ OS and iOS both.

Now available in Pearl Matte Shadow Green.



Suzuki Ride Connect* Edition with Bluetooth® Enabled Digital Console**

Now, reach your destination without any confusion. The Bluetooth® Enabled Digital Console gives you Big and Bold Turn-by-Turn Navigation icons, keeping you on the right route every time.



Missed Call Alert & Caller ID^^

Get to know who is calling and view missed calls, without even touching the phone, on the Bluetooth® Enabled Digital Console.



Speed Exceeding Alert

Set a speed limit on your Suzuki Ride Connect app and get an alert whenever you exceed that limit.



Call, SMS & WhatsApp Alerts

LCD and LED Blinking + Notification display on cluster.



Phone Battery Level Display

Phone Battery Level Display so that you never run out of power.



Turn-by-Turn Navigation

Big and bold Turn-by-Turn Navigation icon display so that you never go off track from your destination.



ETA Updates

Estimated Time of Arrival display for never being late to your destination.

^^Missed Call Alert & Caller ID feature is available in Android™ OS only. *Suzuki Ride Connect app is available for Android™ OS and iOS both.
**Bluetooth® Enabled Digital Console is only available in Ride Connect Edition.



**DUAL TONE
SEAT COLOR***

To give your vehicle's seat
an elegant finish.



**DUAL TONE
INNER LEG SHIELD***

To give your ride a
premium look.

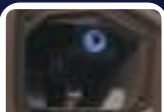
FEATURES



**BLUETOOTH® ENABLED
DIGITAL CONSOLE***



**ENGINE START AND STOP
SWITCH WITH SUZUKI
EASY START SYSTEM**



USB SOCKET*



**FRONT DISC
BRAKE**



**LUXURIOUS LED
HEADLIGHTS AND
POSITION LIGHTS**



**LED REAR
COMBINATION
LIGHT**



**STANDARD BODY
MOUNT
WINDSCREEN**



**SPORTY
MUFFLER
COVER**



**FLEXIBLE
FOOT POSITION
FOR RIDER**



**21.5 L
UNDER SEAT
STORAGE**



**2L GLOVE BOX &
RACK
FOR STORAGE**



**CONVENIENT
DUAL LUGGAGE
HOOKS**



**SHUTTER KEY
WITH
CENTRAL SEAT LOCK**



**ALUMINIUM
PILLION
FOOTREST**



E20 COMPLIANT

As a part of our effort
towards carbon reduction,
entire range of Suzuki
scooters is now E20
compliant. E20 Fuel type is
more environment friendly
as its use results in lower
carbon emission.

GENUINE ACCESSORIES^



SIDE STEP



ACCESSORY BAR



SEAT COVER

*Available in Burgman Street Ride Connect Edition.
DC Socket and Multi Function Digital Meter available in Burgman Street Standard Edition.



SUZUKI BURGMAN STREET

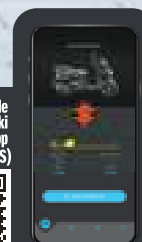
BURGMAN STREET COLOR VARIANTS

Standard Edition	 QUS - Pearl Matte Shadow Green	 YWC - Pearl Moon Stone Grey	 YKV - Metallic Matte Black No. 2	 QMV - Metallic Matte Bordeaux Red	 YPA - Pearl Mirage White
Ride Connect	 QUS - Pearl Matte Shadow Green	 YUA - Matte Blue	 YKV - Metallic Matte Black No. 2	 QMV - Metallic Matte Bordeaux Red	 YPA - Pearl Mirage White

*Scan this QR code to download Suzuki Ride Connect App (iOS)



*Scan this QR code to download Suzuki Ride Connect App (Android™ OS)



UNIQUE APP FEATURES



**Big & Bold
TBT Navigation Icons**



**Short Distance
Indicator Bar**




**Last Parked
Location**

ENGINE

Type :	4-Stroke, 1-Cylinder, Air-Cooled
Valve System:	SOHC, 2 Valve
Displacement:	124 cm ³
Bore x Stroke:	52.5 x 57.4 mm
Engine Output:	8.7ps @ 6750 rpm
Torque:	10.0Nm @ 5500 rpm
Fuel System:	Fuel Injection
Starter System:	Kick and Electric
Transmission Type:	CVT

Visit us at: www.suzukimotorcycle.co.in [f /suzuki2wheelers](#) [You Tube /suzuki2wheelers](#) [Twitter /suzuki2wheelers](#) [Instagram /suzuki2wheelers](#)

Regd. Office, Sales & Marketing Office: 2nd Floor, Plot No. 1, Nelson Mandela Road, Vasant Kunj, New Delhi - 110 070. Fax: 011-4607 5418.  Ride safe. Wear a helmet. | Prices of the vehicles are available on our website

Specifications, appearances, equipments, colors, materials and other items of the Suzuki products shown in this leaflet are subject to change by manufacturers at anytime without notice and they may vary depending upon local conditions and requirements. Please visit your local dealer for details of any changes. Actual body color may differ from the colors in this leaflet. *Accessories are not a part of standard equipment.

We reserve the right to make changes at any point of time, without prior notice in design, colour, specifications and features of product. All items/ products shown above are indicative only and may vary in actual. Colours shown may vary from actual body colour of the product due to printing. Accessories shown in the pictures are not a part of the standard product. For the latest authentic information, kindly contact your nearest Authorized Dealer. *Suzuki Ride Connect Application is available for Android™ OS Version 6 onwards. Android is a trademark of Google LLC. *Suzuki Ride Connect application is available for iOS version 12.0 onwards. IOS is a trademark or registered trademark of Cisco in the U.S. and other countries and is used under license. **Missed call alert and caller ID feature is available in Android™ OS only. The Bluetooth® word mark and logos are registered trademarks owned by Bluetooth SIG, Inc. and any use of such marks by Suzuki is under license.

DIMENSIONS AND WEIGHT

Overall Length:	1,880 mm
Overall Width:	715 mm
Overall Height:	1,140 mm
Wheelbase:	1,265 mm
Ground Clearance:	160 mm
Seat Height:	780 mm
Kerb Mass:	110 kg
Wheels:	Alloy
Fuel Tank:	5.5 L

BRAKE

Front:	Disc
Rear:	Drum

SUSPENSION

Front:	Telescopic
Rear:	Swing Arm

TYRE SIZE

Front:	90/90-12 54J Tubeless
Rear:	90/100-10 53J Tubeless

ELECTRICAL

Battery:	Maintenance Free 12V, 4Ah
Headlight:	LED

Authorised Dealer



Please scan this QR code to visit our website



##Including 3 Years optional warranty.

***Extended warranty is offered by third party.